

# AlphaPix 4T

4,8 mm pixel pitch outdoor rental LED screen

ORDER CODE: **APIX4T**



In this fast-paced market, the **AlphaPix 4T** Touring family consistently keep ahead of the game by delivering top quality images with the latest high-resolution temporary outdoor LED display.

The **AlphaPix 4T** uses high-brightness, black-faced, square LEDs with UV coatings in a robust, lightweight die-cast aluminium housing. The frame and fast interlocking system create a seamless image with minimal setup time.

To deliver the perfect image, the **AlphaPix 4T** series features a high-refresh rate, advanced greyscale properties and automatic image correction along with a 140° viewing angle.

## MAIN FEATURES

- Outdoor (IP65/IP54) die-cast aluminium housing for temporary outdoor installation
- Gapless panel joins for seamless image
- High-brightness square LEDs with UV coating
- Flicker-free on camera
- High-performance video reproduction at every level of brightness
- 140° viewing angle
- CE and EMC certified by TUV

## TECHNICAL SPECIFICATION

### VIDEO

- LED source: SMD 2727 high-power FC black frame
- Pixel pitch: 4.8 mm
- Panel resolution: 104×104 pixels
- Module resolution: 52x52 pixels
- Luminous flux: 5.500 nit
- Grayscale: 16 bit
- Refresh rate ≥: 1.920 Hz
- Vertical viewing angle: 140°
- Horizontal viewing angle: 100°
- LED density: 43.264 LED/sqm

### ELECTRICAL

- Power input/output: Seetronic powerCON
- Max power consumption (panel): 171 W
- Avg power consumption (panel): 57 W
- Max power consumption (sqm): 684 W
- Avg power consumption (sqm): 228 W
- Max power output: 12 modules

### CONTROL

- Control protocol: Novastar
- Signal input: waterproof Seetronic RJ45
- Signal output: waterproof Seetronic RJ45

### MECHANICS

- Module size (WxH): 250x250 mm
- Panel size(WxHxD): 500x500x96 mm
- Connection: seamless locking system
- Body: die-cast aluminium housing
- IP rating: IP65 / IP54
- Panel weight: 8,5 kg
- Weight per square meter: 34 kg
- Compliant Standard: CE

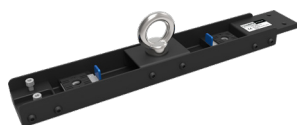
## ACCESSORIES & RELATED PRODUCTS

- AP2366CASE: Flight case for 6pcs APIX series LED display, 600x755x795 mm
- AP236H2B1: Fly bar for APIX2, APIX3, APIX6, APIX4T hanging systems, 1 column
- AP236H2B2: Fly bar for APIX2, APIX3, APIX6, APIX4T hanging systems, 2 columns
- AP236XJ: Metal joint used to connect 4 APIX2, 3, 6, 4T, modules, M10 hole for clamp
- APRD: Steel security cable for APIX hanging systems, L. 200 cm
- AP6TACL01: Power cable for APIX6T, APIX4T, L.125 cm
- AP6TDCL01: Data cable for APIX6T, APIX4T, assembled with RJ45, L.100 cm
- APIX600GSB1: APIX ground stacking system, PRO version (up to 6 m), single base
- APIX600GSB2: APIX ground stacking system, PRO version (up to 6 m), double base
- APIX600GSBS: APIX ground stacking system, PRO version (up to 6 m), queer back support
- APIX600GSBV: APIX ground stacking system, PRO version (up to 6 m), base unit vertical

## ACCESSORIES



AP2366CASE



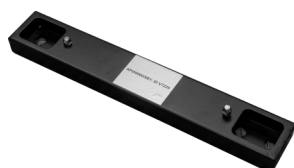
AP236H2B1



AP236H2B2



APIX600GSBS



APIX600GSB1



APIX600GSB2



APIX600GSBV



AP236XJ



APOS



APRD

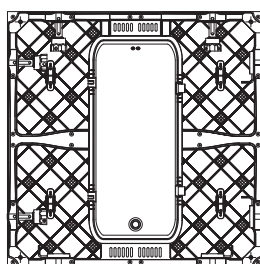
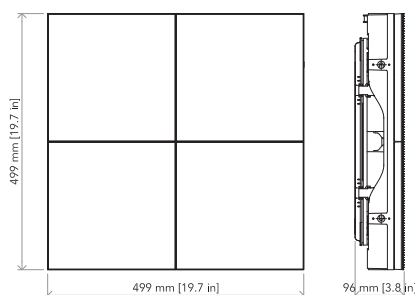


AP6TACL01



AP6TDCL01

## TECHICAL DRAWINGS



**PROLIGHTS** is a trademark of  
**MUSIC & LIGHTS S.r.l.**  
[musiclights.it](http://musiclights.it)

Via A. Olivetti snc  
04026 - Minturno (LT) ITALY  
Tel: +39 0771 72190



For more product  
info and downloads  
visit our website



**prolights.it**  
[info@prolights.it](mailto:info@prolights.it)