

Aria 700Profile

400W RGBW theatrical LED profile light

ORDER CODE: **ARIA700PROFILE**



Aria 700Profile is a 400W theatrical LED light designed to bring refinement and silence to the stage. Featuring a custom RGBW engine which delivers an extensive colour palette and an optical system designed to allow the layering of effects. The **Aria 700Profile** puts the theatre into LED.

MAIN FEATURES

- Full spectrum RGBW LED engine for extensive pastel colour palette and HD dimming
- A near-silent operation for use even in front of house
- Animation wheel and full-framing shutters with individual depth and angle control of each blade as well as module index

TECHNICAL SPECIFICATION

LIGHT SOURCE

- Source: 400W custom RGBW LED
- CCT: Tunable 2.000 K ~ 10.000K
- Luminous flux: (10,8°) 5'363 lm - (45,7°) 5'468lm @full
- Lux: (10,8°) 8'460 lx - (45,7°) 688lx @5 m full
- Source life expectancy: 50.000 h

OPTICS

- Zoom: 10,8° - 45,7° motorised linear zoom
- Lens type: HD anti-reflection lenses with achromatic coating
- Focus: motorised with auto-focus
- Other: high-quality flat-field projection

COLOUR SYSTEM

- Colour mixing: RGBW / FC
- CCT: CCT control through dedicated DMX channel
- White presets: 2000 K ~ 8000K
- Colour wheel: virtual colour wheel with macros

DYNAMIC EFFECTS

- Shutter system: 4 shutter blades with position and $\pm 30^\circ$ angle adjustment, $\pm 45^\circ$ rotation of the complete framing system
- Animation wheel: animation wheel with CW and CCW rotation
- Rotating gobos: 7 rotating gobos + open, interchangeable, indexing
- Gobo size: outer: 26,7 mm - image: 22 mm - thickness: 0,3 mm
- FX generator: shutter macros with adjustable speed
- Circular prism: 3f with bi-directional rotation, indexing
- Frost: linear 0 - 100% frost filter
- Iris: 5 - 100% motorised iris

BODY

- Pan angle: 540°
- Tilt angle: 250°
- Pan/Tilt resolution: 16-bit
- Feedback: automatic repositioning after accidental movement
- Body: aluminium structure with high-resistance polycarbonate cover
- Body colour: black

CONTROL

- Protocols: DMX512, RDM, Art-Net, W-DMX
- DMX channels: 33 / 38 / 39channel
- Wireless Control: included, wireless solution receiver
- RDM: RDM for remote monitoring and settings
- Display: LCD high resolution colour display with autoflip
- Firmware upgrade: yes, via USB - DMX interface (UPBOX1) not included

ELECTRONICS

- Dimmer: linear 0 ~ 100% electronic dimmer
- Dimmer curves: 4 selectable dimming modes available
- Strobe / shutter: 1 - 28 Hz, electronic
- Operating temperature: $-10^\circ \sim +45^\circ$
- LED Control: flicker free operation

ELECTRICAL

- Mains power supply: 100-240V - 50/60Hz
- Max power consumption: 390W
- Output (at 230V): 8 units on a single power line
- Power factor: $> 0,94$

PHYSICAL

- IP rating: 20
- Cooling: combination of heat pipe cooling system and low noise fan
- Suspension and fixing: any position with quick-lock omega brackets
- Pan / tilt lock: for transportation and maintenance
- Signal connection: Amphenol XLR 5p IN/OUT connectors
- Data connection: Art-Net RJ45 IN/OUT
- Power connection: Neutrik powerCON TRUE1 IN/OUT connectors
- Dimensions (WxHxD): 408x676x257mm
- Weight: 26kg

CERTIFICATIONS / APPROVALS

- Certifications / Approvals: CE, UKCA, RCM, cTUVus, FCC

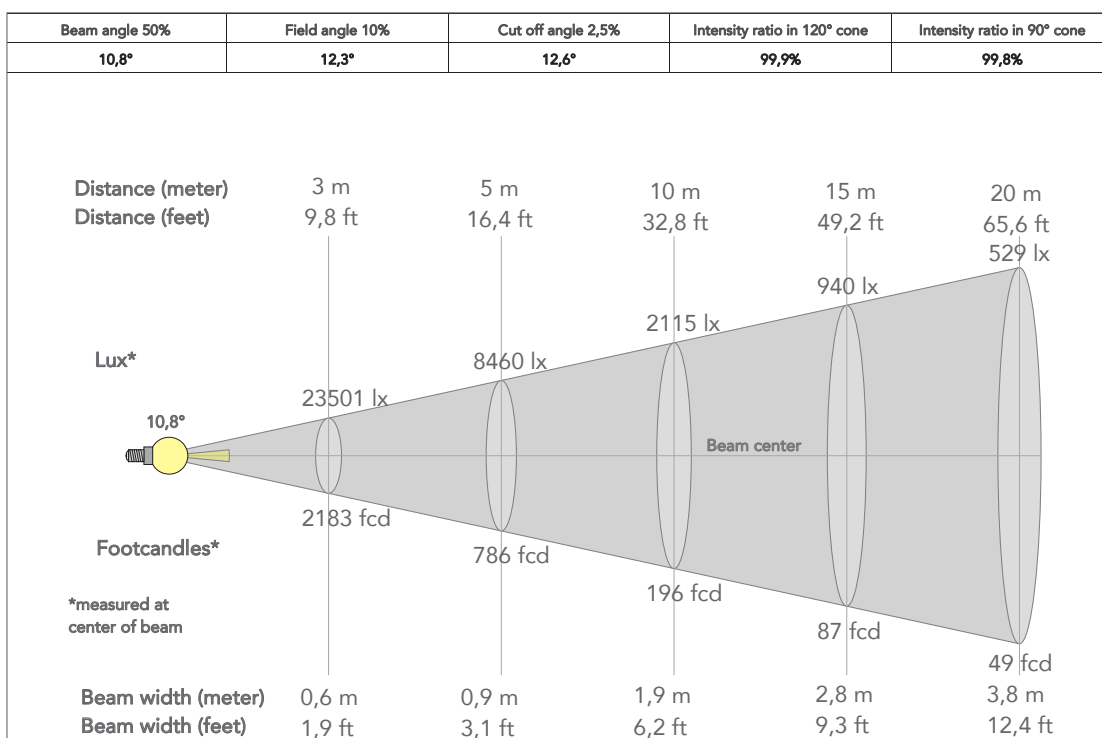
ACCESSORIES & RELATED PRODUCTS

- | | |
|----------------|--|
| • 9513FXWL03 | Ass. 3x2.5mm TH07 cable, 16A 3p 230V CEE plug, MENAC3FXW socket, L.3m |
| • 9533FXWL03 | Ass. 3x2.5mm TH07 cable, SHUKO plug, MENAC3FXW socket, L.3m |
| • 958225L03 | 3x2.5mm TH07 Cable, 16A 3p PwCon MXW, 16A 3p PwCon FXW, L. 3m |
| • C6016B | Quick-trigger slim clamp, 250Kg load, 48-51mm tubes, M10 bolt incl, Black |
| • RSR1235B | Steel security cable for hanging bodies, inox steel shackle, L=120 cm, black |
| • TOUR53415L03 | Dmx cable HC5340. CANC5MXX XLR 5p->CANC5FXX XLR (f) 5p, L.3m |

- | | |
|--------------|---|
| • WSBBF1G5 | BlackBox F-1 G5 transmitter, 2,45GHz & 5.2/5,8 GHz, DMX/ RDM, 512Ch |
| • WSBBF1G6 | BlackBox F-1 G6 transrec, 512ch, 2.45GHz, DMX&RDM,Bluetooth,G3,G4,G4S, G5, CRMX |
| • WSBBR512G5 | BlackBox R-512 G5 receiver 512Ch, 2.45GHz & 5.8GHz, DMX/ RDM optional |
| • WSBBR512G6 | BlackBox R-512 G6 receiver 512Ch, 2.45GHz,DMX&RDM,Blue tooth,G3,G4,G4S,G5,CRMX |
| • FCLARIA700 | Flight case for 2x ARIA700, foam shells included |
| • FSHARIA700 | 1U Foam shell compatible with ARIA700 |
| • OS25 | Quick-Lock omega bracket |
| • UPBOX1U | Firmware uploader kit, USB IN, 3pin XLR DMX OUT, USB OUT |

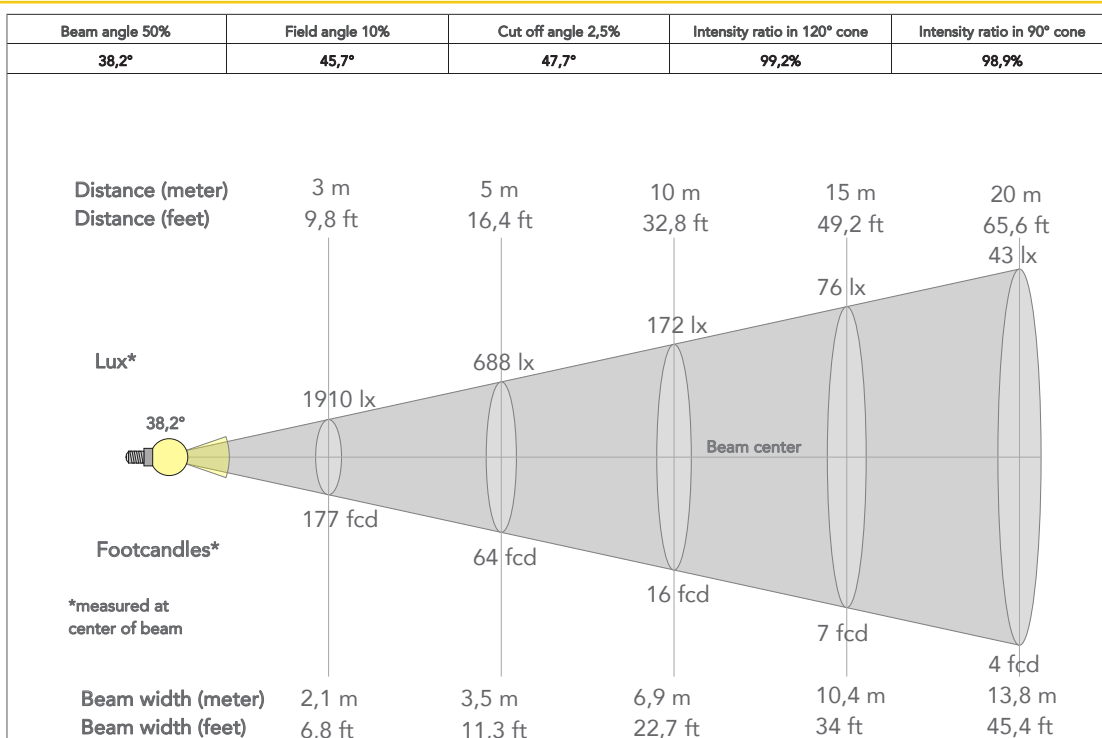
PRESET FULL ON

Beam angle 50%: 10,8°

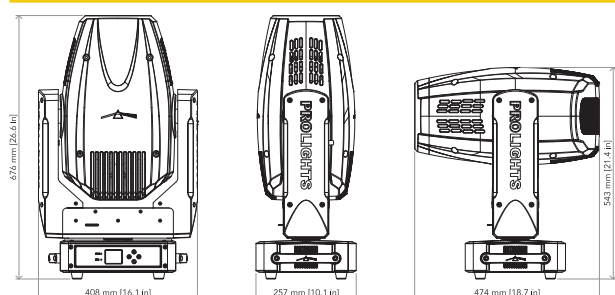


PRESET FULL ON

Beam angle 50%: 45,7°



TECHNICAL DRAWINGS



CERTIFICATIONS / APPROVALS



Conforms to UL STD. 1573
Certified to CSA STD: C22.2 NO. 166

Visit our website
for specifications and
tech documentations

