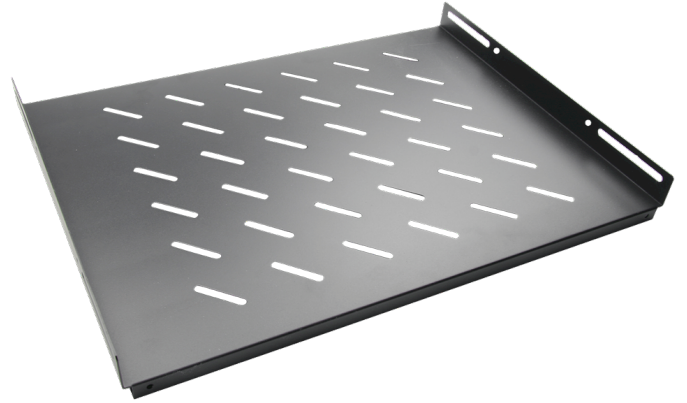


# WPR60FS

19" fixed shelf - 550mm depth

A 19" Fixed shelf made of steel with a plate thickness of 1,2 mm and provided with a black (RAL9004) structured powder coating. The shelf can be used to store equipment which doesn't contain a standard 19" mounting fixture. For use WPR racks only.



## Product Features:

Dimensions	490 x 15 x 425 mm (W x H x D)
Weight	2.800 kg