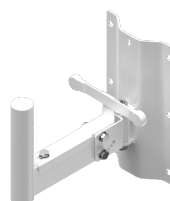


Speaker wall mount bracket - 35mm pole - 250mm

Highlights:

- 250 mm distance to wall
- Fits all speakers with 35 mm stand adaptor
- Speaker blocking
- 5-Step adjustable incline angle (0° - 45°)
- Horizontal swivel adjustment at any angle
- Solid steel construction
- Can carry a max load of 40 kg
- Available in Black (/B) & White (/W)

The WLB25 is a wall mountable speaker installation bracket, containing a 35 mm pole which allows safe and easy installation for any loudspeaker fitted with a 35 mm pole adapter. The incline angle is adjustable in 5 steps from 0° up to 45° while in horizontal way the speaker can be adjusted in any direction. A speaker blocking mechanism keeps it in the right direction after installed. The solid steel construction allows a maximum load of 40 kg. The WLB25 is available in both black (/B) and white (/W) colour.



Product Features:

Dimensions	140 x 250 x 267,5 mm (W x H x D)
Weight	2.120 kg
Max. load	40 kg
Pole mount	35 x 120 mm (Ø x H)
Distance to wall	250 mm
Adjustable angle	0° / 11.25° / 22.5° / 33.75° / 45°
Construction	Steel
Colours	Black (RAL9004)
	White (RAL9010)

Variants:

- WLB25/B - Black version
- WLB25/W - White version