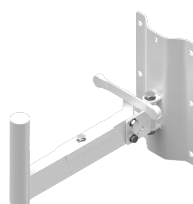


### Highlights:

- 350 mm distance to wall
- Tube diameter 35 mm
- Speaker blocking
- 5-Step adjustable incline angle (0° - 45°)
- Horizontal swivel adjustment at any angle
- Solid steel construction
- Can carry a max load of 40 kg

The WLB35 is a wall mountable speaker installation bracket, containing a 35 mm pole which allows safe and easy installation for any loudspeaker fitted with a 35 mm pole adapter. The incline angle is adjustable in 5 steps from 0° up to 45° while in horizontal way the speaker can be adjusted in any direction. A speaker blocking mechanism keeps it in the right direction after installed. The solid steel construction allows a maximum load of 40 kg. The WLB35 is available in both black (/B) and white (/W) colour.



### Product Features:

|                  |                                    |
|------------------|------------------------------------|
| Dimensions       | 140 x 250 x 367,5 mm (W x H x D)   |
| Weight           | 2.290 kg                           |
| Max. load        | 40 kg                              |
| Pole mount       | 35 x 120 mm (Ø x H)                |
| Distance to wall | 350 mm                             |
| Adjustable angle | 0° / 11.25° / 22.5° / 33.75° / 45° |
| Construction     | Steel                              |
| Colours          | Black (RAL9004)                    |
|                  | White (RAL9010)                    |

### Variants:

- WLB35/B - Black version
- WLB35/W - White version